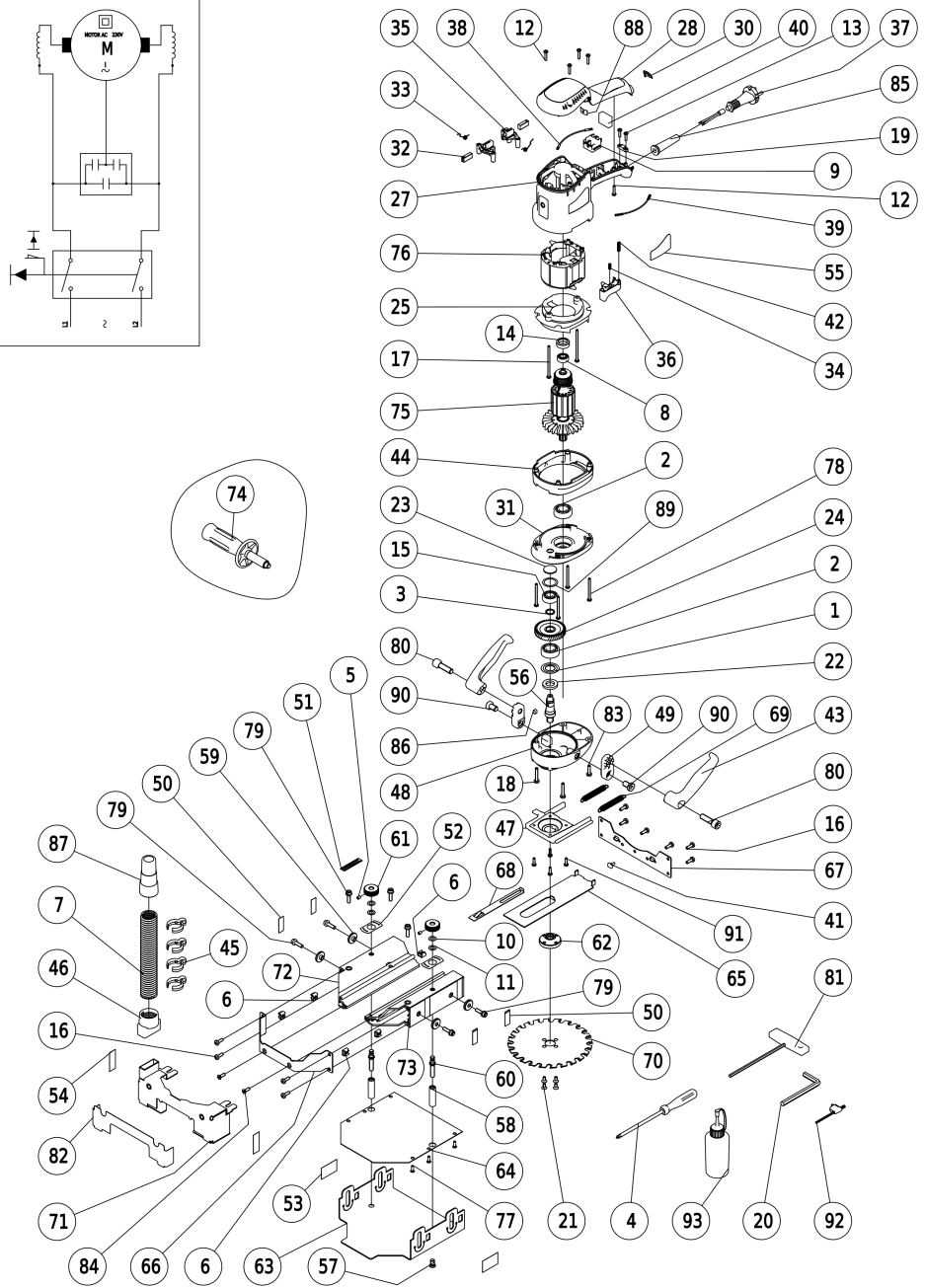
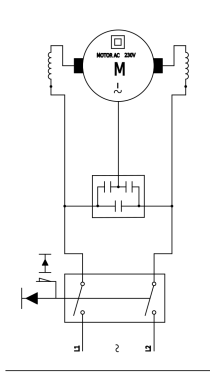




Technical information
Explosion drawing and parts list

RZ270S (7000300) RZ270S BASE BOARD/DOORS CUTTING MACHINE | Version A (From serial number 1)





Technical information
Explosion drawing and parts list

RZ270S (7000300) RZ270S BASE BOARD/DOORS CUTTING MACHINE | Version A (From serial number 1)

Pos.	Serial No.	Code	Description	Quantity
1		1023002	BEARING PROTECTOR D.35	1
2		1210001	BALL BEARING 6202 LLB	2
3		1288012	RETAINING RING SW-15	1
4		1499031	SCREWDRIVER	1
5		1575038	HEX. SOCKET SET SCREW M.5X8	2
6		1685016	SQUARE NUT ASS'Y M.6	5
7		1799100	DUST COLLECTOR PIPE INT.D.25	1
8		1910002	BALL BEARING 608-ZZ	1
9		2015043	SWITCH	1
10		2023021	SPRING WASHER E=0.2	2
11		2023022	WASHER	2
12		2079001	SCREW D.4X20 (TX)	5
13		2079002	SCREW D.4X16 (TX)	2
14		2404188	BUSHING D.22	1
15		3010004	BALL BEARING 6200 LLB	1
16		3178016	SCREW M.5X15 PH.	10
17		3370054	SCREW M.8X73 PH.B.	2
18		3378015	SCREW M.5X30 PH.	2
19		4302025	CORD CLAMP	1
20		4399033	HEXAGON BAR WRENCH 8 mm	1
21		4475024	HEX. SOCKET FLAT HD. SCREW M.5X10	4
22		4524025	FELT PACKING	1
23		4524088	BEARING CAP	1
24		4587016	GEAR	1
25		4602380	FAN DEFLECTOR	1
27		4602396	HOUSING WITH COVER	1
28		4602397	HOUSING COVER	1
30		4602419	CAP	1
31		4606351	MOTOR COVER	1
32		4617031	CARBON BRUSHES SET	1
33		7026182	BRUSH SPRING	2
34		4626154	SPRING	1
35		7045791	BRUSH HOLDER ASS'Y	2
36		4646374	PUSH BUTTON W/LOCK ASS'Y (V2)	1
37		4645495	CORD 2X1 (EUROPE)	1
38		4650140	WIRING (STATOR-SWITCH)(LONG)	1
39		4650141	WIRING (STATOR-SWITCH)(SHORT)	1
40		4668252	CAPACITOR	1
41		6404053	RUBBER	1



Technical information
Explosion drawing and parts list

RZ270S (7000300) RZ270S BASE BOARD/DOORS CUTTING MACHINE | Version A (From serial number 1)

Pos.	Serial No.	Code	Description	Quantity
42		6626085	SPRING	1
43		7002086	SIDE HANDLE	2
44		7002381	HOUSING SUPPLEMENT	1
45		7002587	PIPE-CORD CLAMP	4
46		7004221	NOZZLE	1
47		7006426	SLIDE	1
48		7006427	GEAR COVER	1
49		7006432	KNOB ADAPTER	2
50		7019344	CUTTING HEIGHT LABEL	4
51		7019345	CUTTING DEPTH LABEL	1
52		7019365	LABEL	2
53		7019392	LABEL	2
54		7019393	LABEL	2
55		7019452	LABEL	1
56		7020114	SHAFT	1
57		7021275	FIXING SCREW	2
58		7021276	COLUMN	2
59		7021280	WASHER	4
60		7021369	REGULATING SHAFT	2
61		7021370	REGULATING WHEEL	2
62		7021371	SAW COUPLING	1
63		7023365	BASE	1
64		7023366	SAW PROTECTION	1
65		7023367	UPPER PROTECTION	1
66		7023368	FRONT COVER	1
67		7023369	REAR COVER	1
68		7023532	STOPPER	1
69		7026149	SPRING	2
70		7040314	SAW BLADE D.165 24Z	1
70		7040316	SAW BLADE D.165	1
70		7040416	SAW BLADE FOR METAL DOORS D.160 d.20	1
71		7045473	FRONT FENCE ASS'Y	1
72		7045488	RIGHT GUIDE	1
73		7045489	LEFT GUIDE	1
74		7045728	KNOB M10X55	1
75		7051201	ARMATURE 230V	1
76		7055192	STATOR 230V	1
77		7070061	SCREW CE 4.2X13	6
78		7070066	SCREW 8X50	4



Technical information
Explosion drawing and parts list

RZ270S (7000300) RZ270S BASE BOARD/DOORS CUTTING MACHINE | Version A (From serial number 1)

Pos.	Serial No.	Code	Description	Quantity
79		7075115	ALLEN SCREW W/CLAMP M.6X20	7
79	190063	7575007	HEX. SOCKET HD. CAP SCREW M.6X20	7
80		7075130	ALLEN SCREW M.10X35	2
81		6699025	HEXAGON BAR WRENCH 5 mm	1
82		7099226	FELT PROTECTION	1
83		7278006	SCREW M.5X20 PH.	2
84		7278010	SCREW M.5X15	2
85		8002043	CORD ARMOR	1
86		8023424	KEY 5X5X7.4	1
87		8204077	SLEEVE	1
88		8484009	FAST LOCK D.4	1
89		8583017	WASHER	1
90		8675090	ALLEN SCREW M.10X16	2
91		8678009	SCREW M.4X15 PH.	4
92		1699014	WRENCH 3 mm	1